

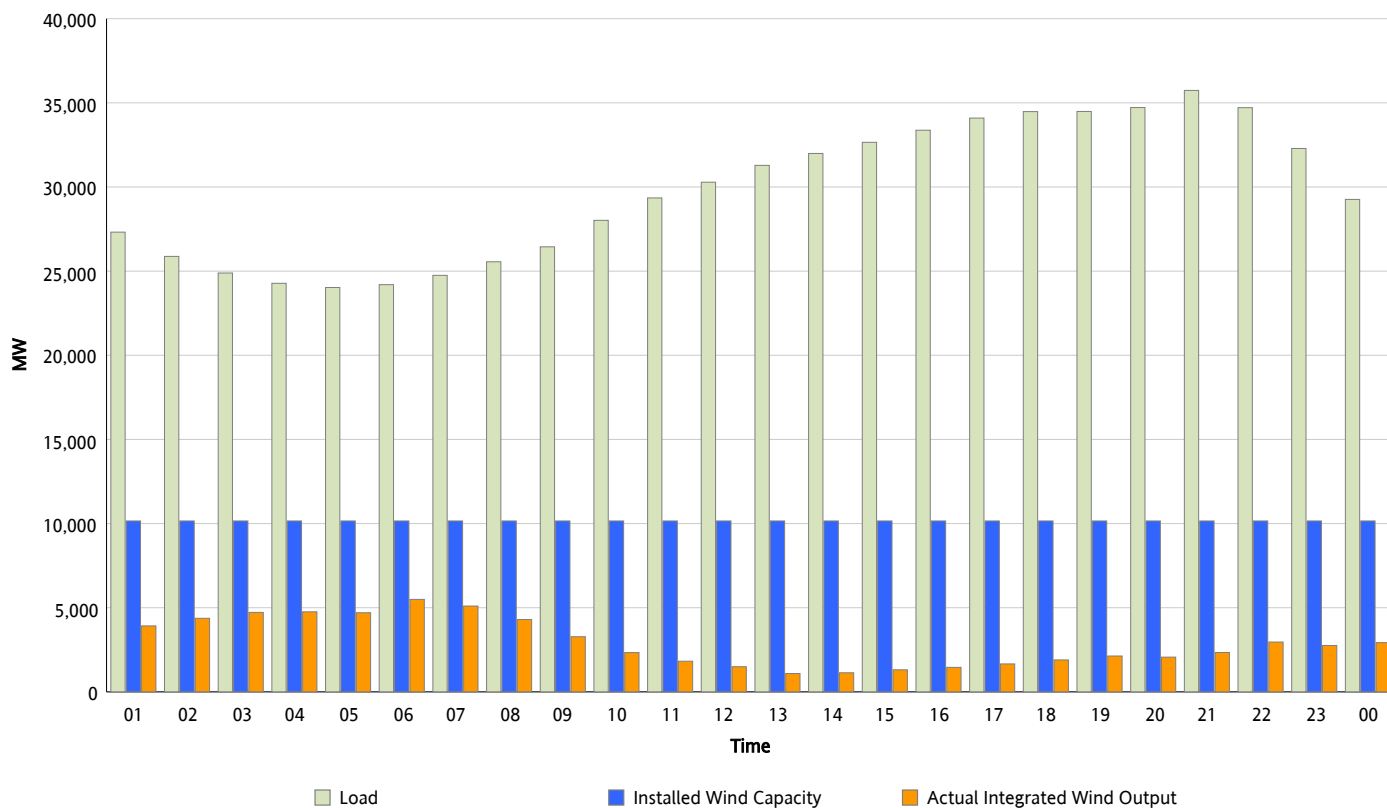


## ERCOT Grid Operations

### Wind Integration Report : 03/17/2013

Peak Load	35,739 MW
Load Peak Hour (HE)	21
Wind Over Peak	2,342 MW
Wind Record 02/09/13	9,481 MW
Max Wind Value*	5,728 MW
Wind Peak Time	05:28
Wind Integration %	23.64 %

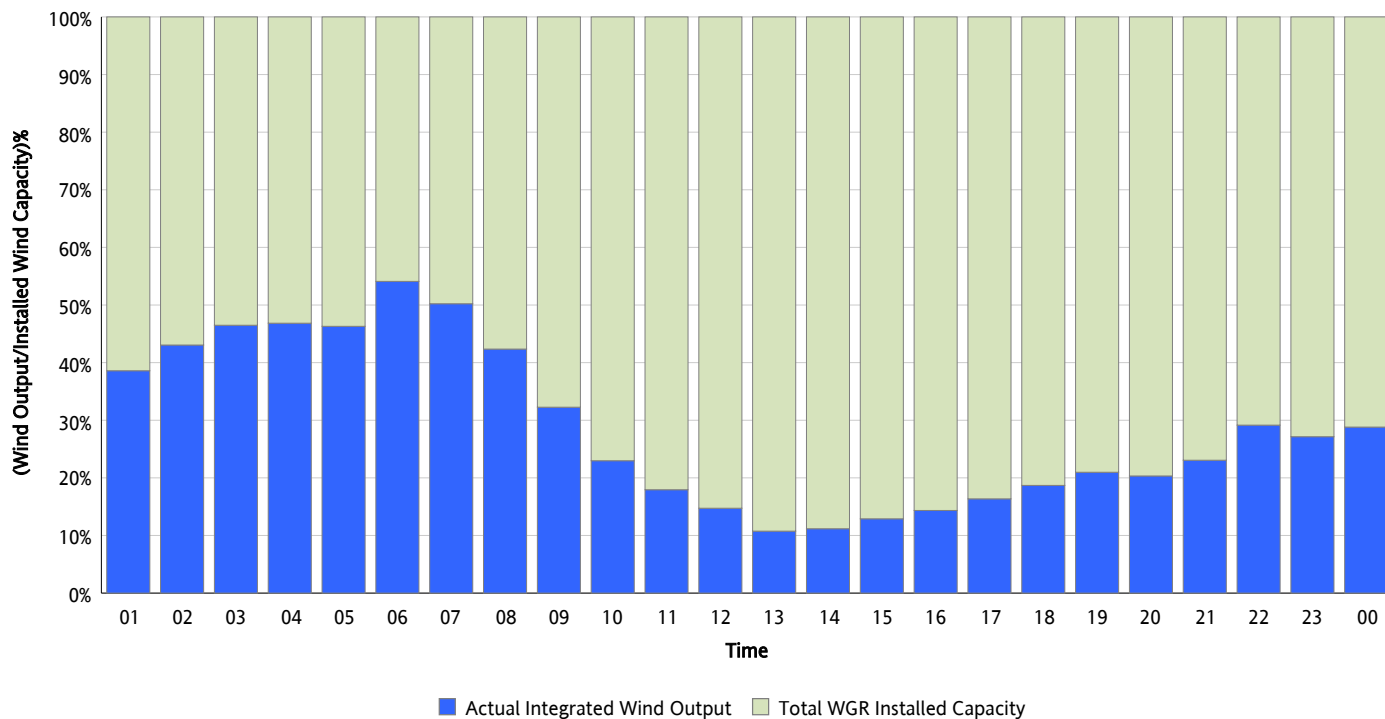
**Hourly Average Actual Load vs. Actual Wind Output**  
**03/17/2013**



*\* Wind Record and Wind Max represent instantaneous values and the rest of the values are integrated over the hour*

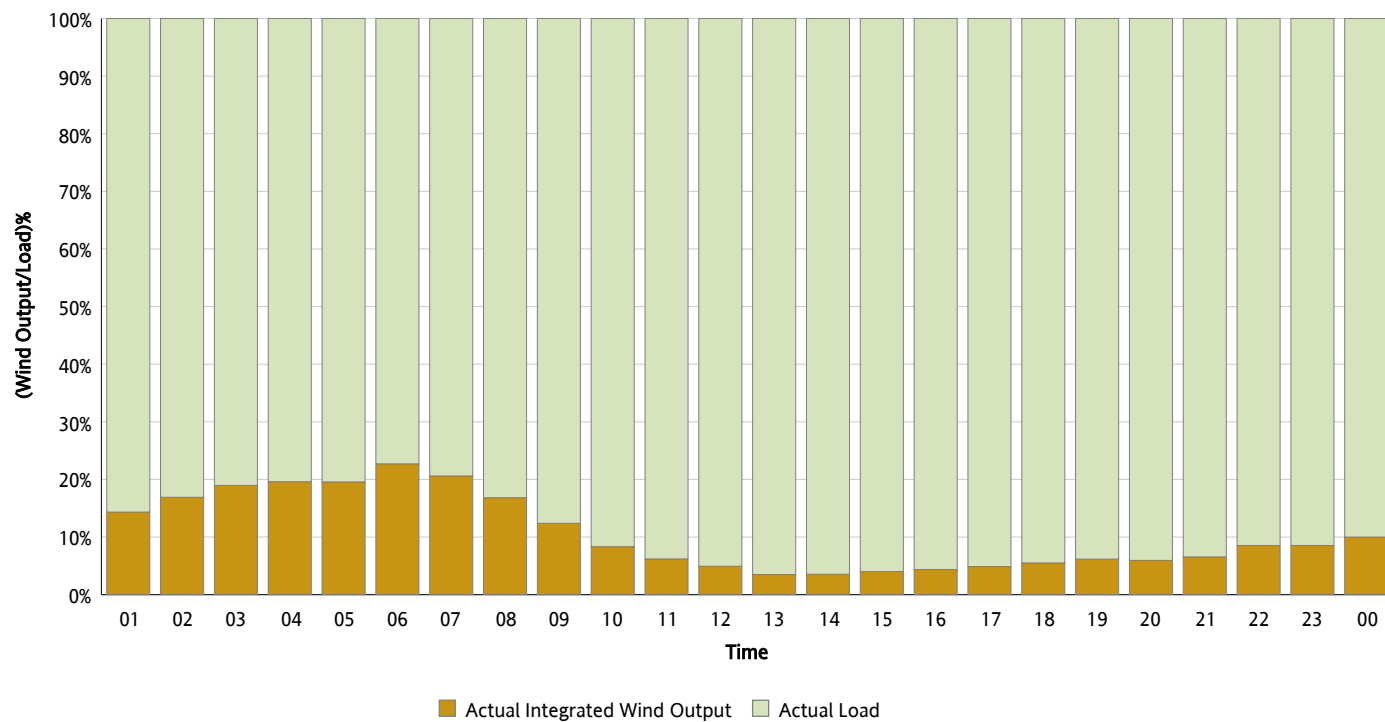
## Actual Wind Output as a Percentage of the Total Installed Wind Capacity

03/17/2013



## Actual Wind Output as a Percentage of the ERCOT Load

03/17/2013



## ERCOT Load vs. Actual Wind Output

03/10/2013 - 03/17/2013

